

1. Installation

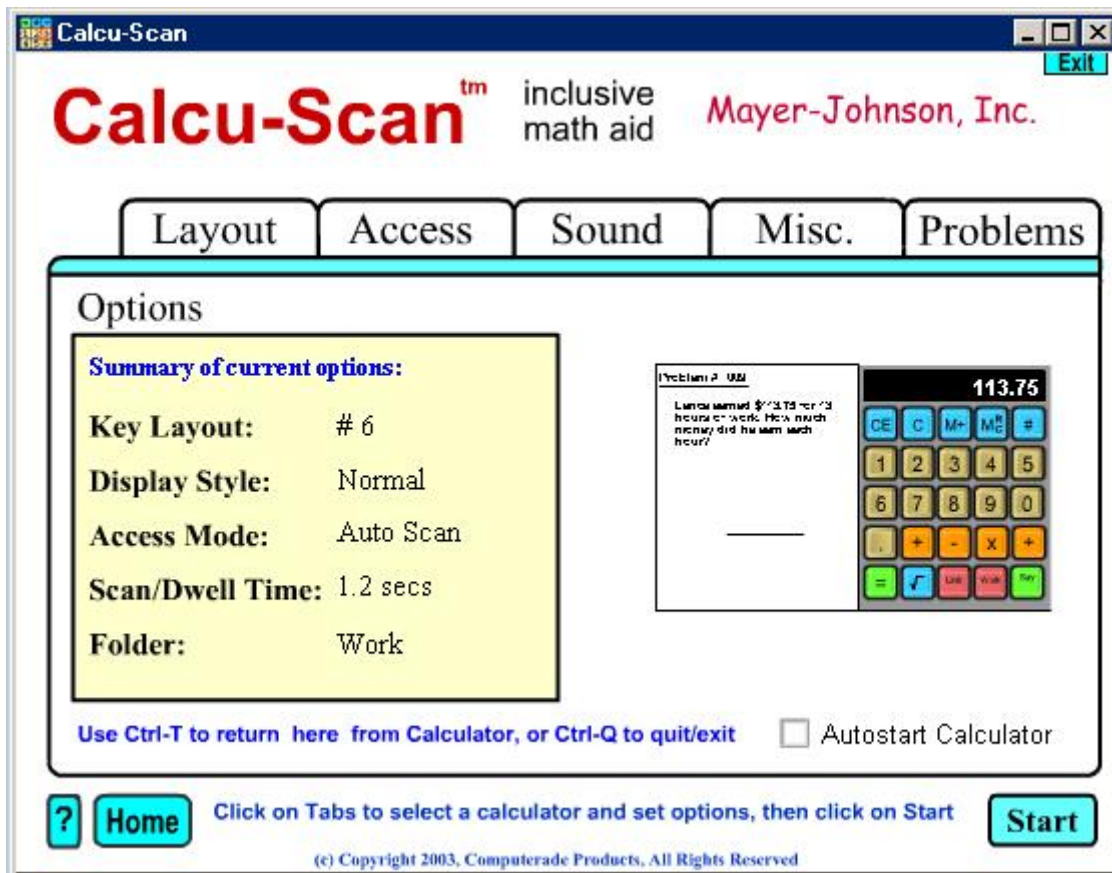
Insert the Calcu-Scan CD-ROM in the drive. The program should autostart. Follow the on-screen instructions. If the program does not auto-start, click on the CD-ROM icon to open it, then click on **SETUP.EXE**.

2. StartUp

After installing the program, click on Windows **Start**, then click on **Programs**, then click on **Calcu-Scan**. The Options startup screen will then be displayed as shown.

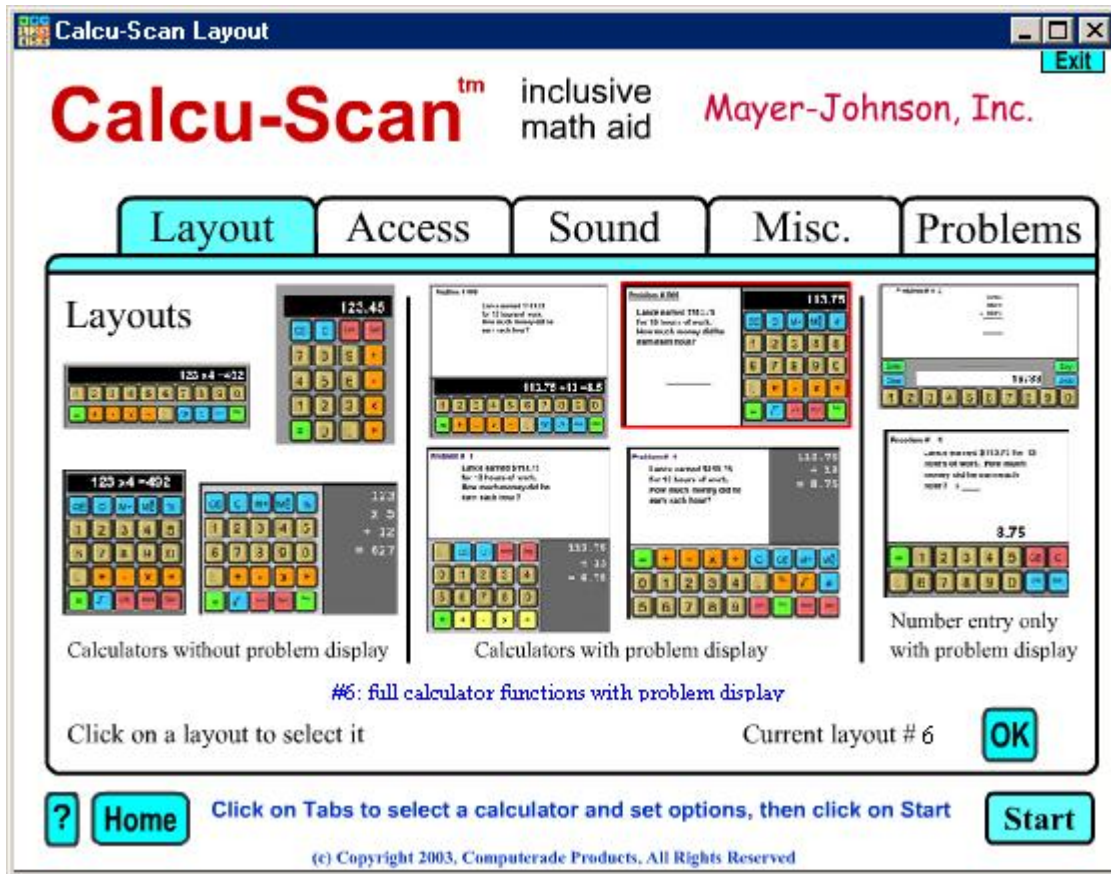
Click on **Start** to use the current calculator with the saved key layout and other options. Click **Exit** or Ctrl-Q to quit.

To change the layout or other options click on the **Option tabs** as described below. To skip Options and go directly to the calculator on startup, check the **Autostart** box.



3. Select a Key Layout

Click on the **Layout** tab then click on the scroll bar to see the available calculator key layouts and move the mouse over the layouts to see the corresponding description. The current selected layout is highlighted in red.



Some of the layouts include an area where the math problem is displayed. Most of the layouts have standard calculator functions, others are numeric entry only layouts for students working on simple arithmetic problems.

Click on the image of the desired calculator key layout to select it, then select **normal** or **scrolling** display.

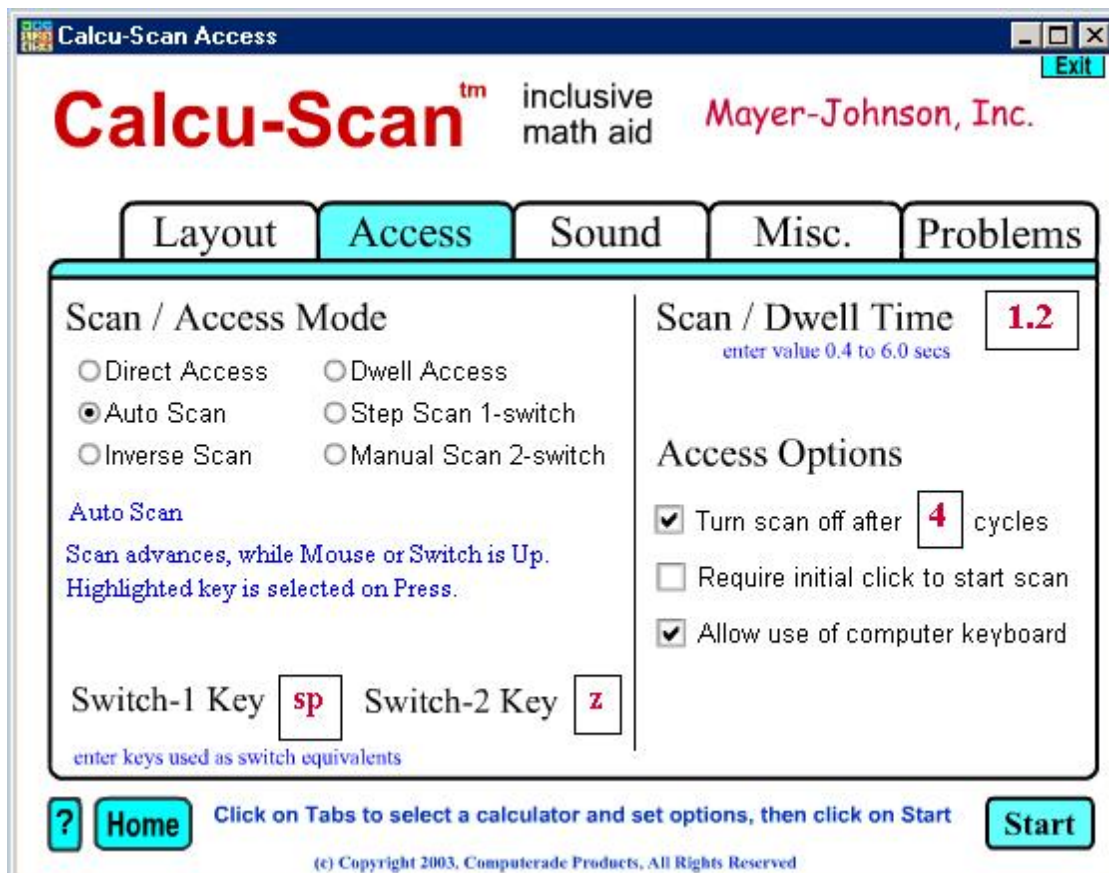
Advanced users can use the **Key Editor** to reassign the key names and colors to suit individual students.

4. Select an Access Mode

Click on the **Access** tab then click on an access mode to see the description and select it. The default setting is **Auto Scan** with a scan interval of 1.2 seconds.

Select **Direct Access** if you are using the program with a mouse or touch screen. **Dwell Access** is for head pointers etc.

Some external switches operate by sending a key code to the computer. The default settings are 'space bar' and 'z'. Check your switch documentation, then enter the required key for switch 1 and for switch 2.



5. Select Sound options

Click on the **Sound** tab then click a checkbox to mark or unmark the corresponding sound or speech option.

6. Select Misc. options

Click on the **Misc.** tab then click on a checkbox to select or deselect the corresponding option.

Click on **Reset Options** if you need to restore all the default options and delete any data saved on disk.<>